

CONNECT WITH NATURE

...wild and beautiful landscapes abundant with
wildlife and natural wonders



ISLE OF MAN / CONNECT WITH NATURE

CONTENTS

ISLE OF MAN
PRODUCT OVERVIEW

WILD PLACES

GLENS, FORESTS AND UPLANDS

IN NATURE TOURS

DARK SKIES

ADDED EXTRAS

ACCOMMODATION

PRODUCT LIST

FUN FACTS

ASSETS

ISLE OF MAN / CONNECT WITH NATURE

ISLE OF MAN

Your clients can escape the everyday and wake up in sublime surroundings...

The Island's outstanding natural landscapes are full of rich history and are ever-changing with the seasons, making the Island a year-round destination.

Long stretching shorelines, enchanted forests and wide open heathland and uplands are a haven for wildlife. There are fascinating geological sites and places on the coast where your clients can spot the wealth of marine life.

This is one of the reasons the Island is a designated UNESCO Biosphere, centred on how our Islanders have learned to live in harmony with our natural environment.

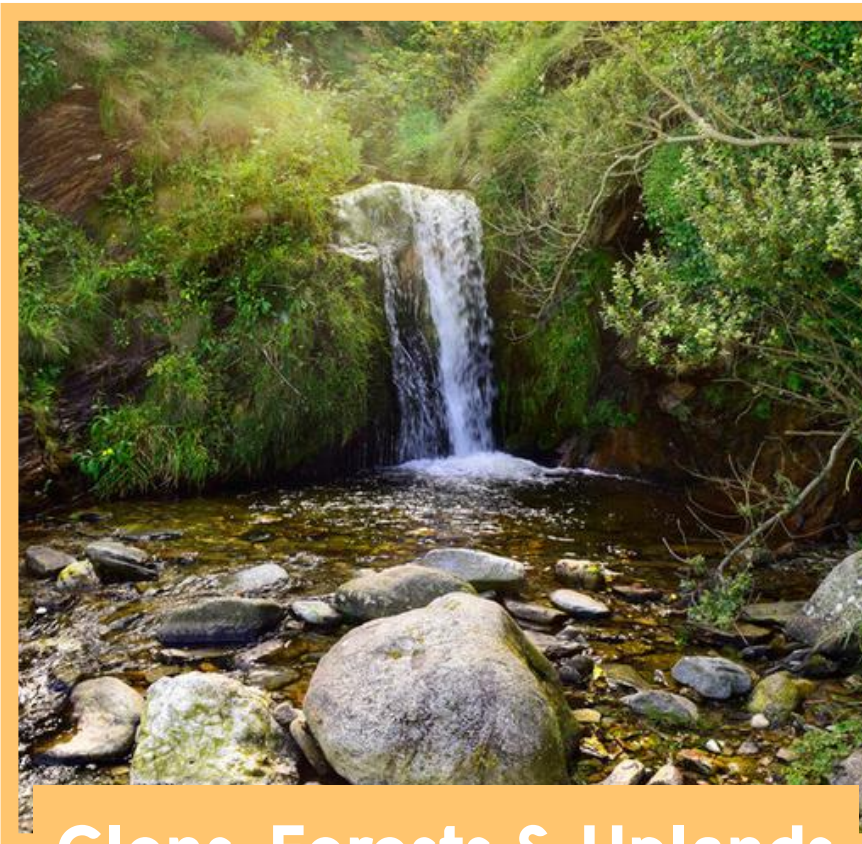


PRODUCT OVERVIEW



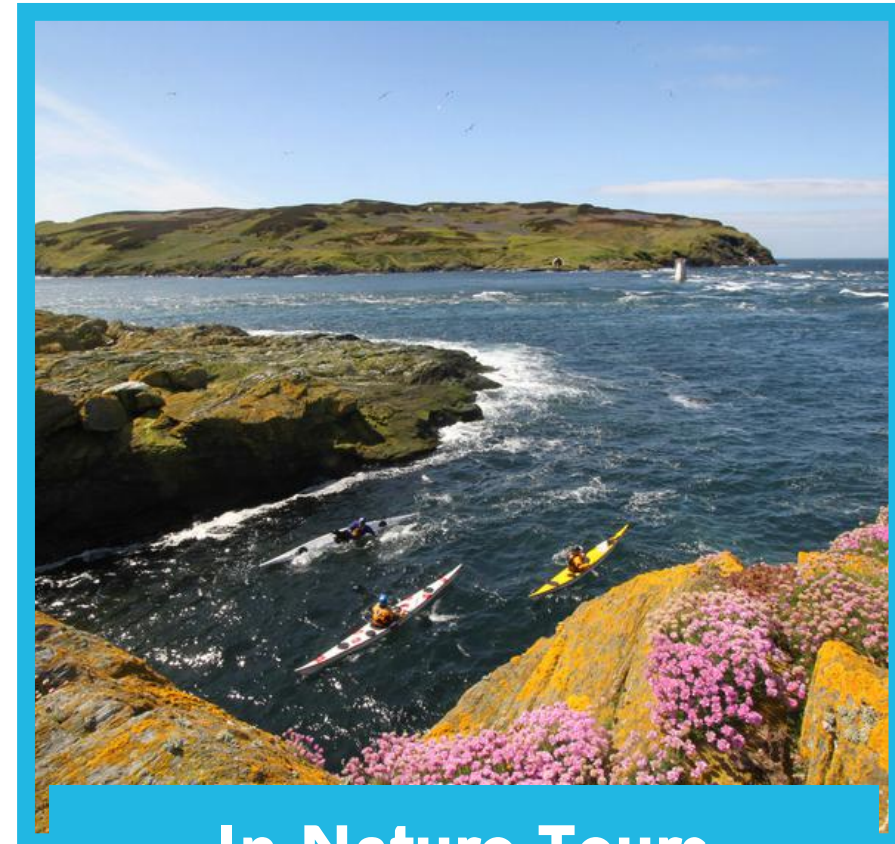
Wild Places

The Island's enviable and diverse landscapes, coastline and habitats make it an incredible place to explore the natural world, uncover fascinating geology and spot coastal bird life and marine life.



Glens, Forests & Uplands

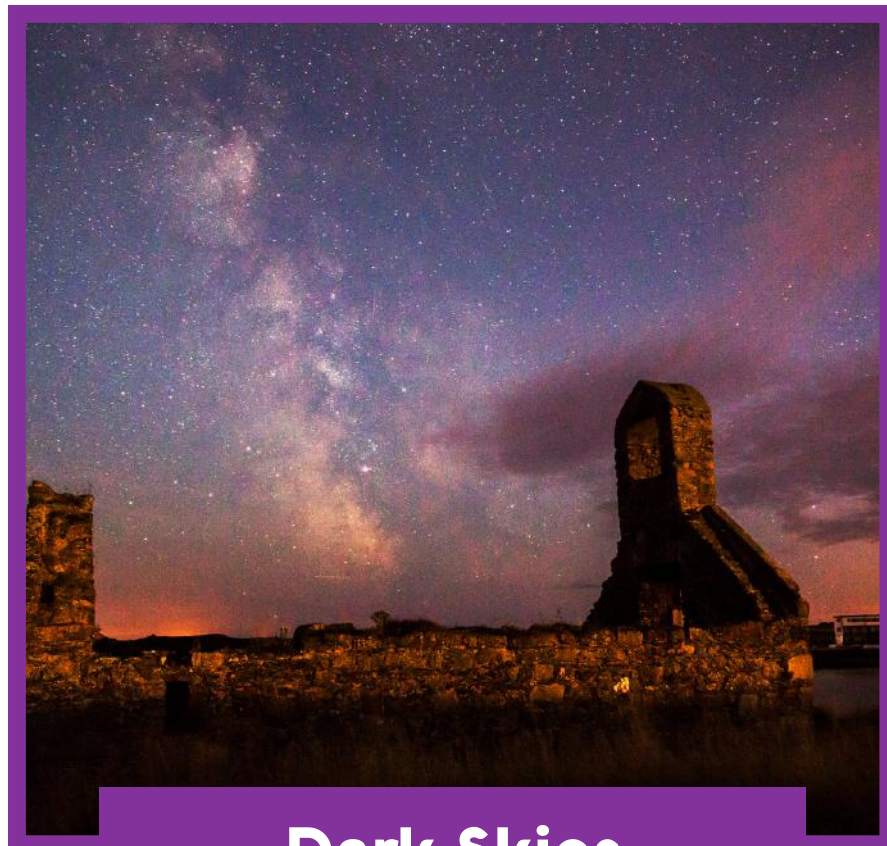
Heather and gorse clad hills and climbs, ancient woodlands and fern-filled glens. These places offer rail journeys, hikes, or meanders and adventurous experiences with great opportunities to spot wildlife.



In Nature Tours

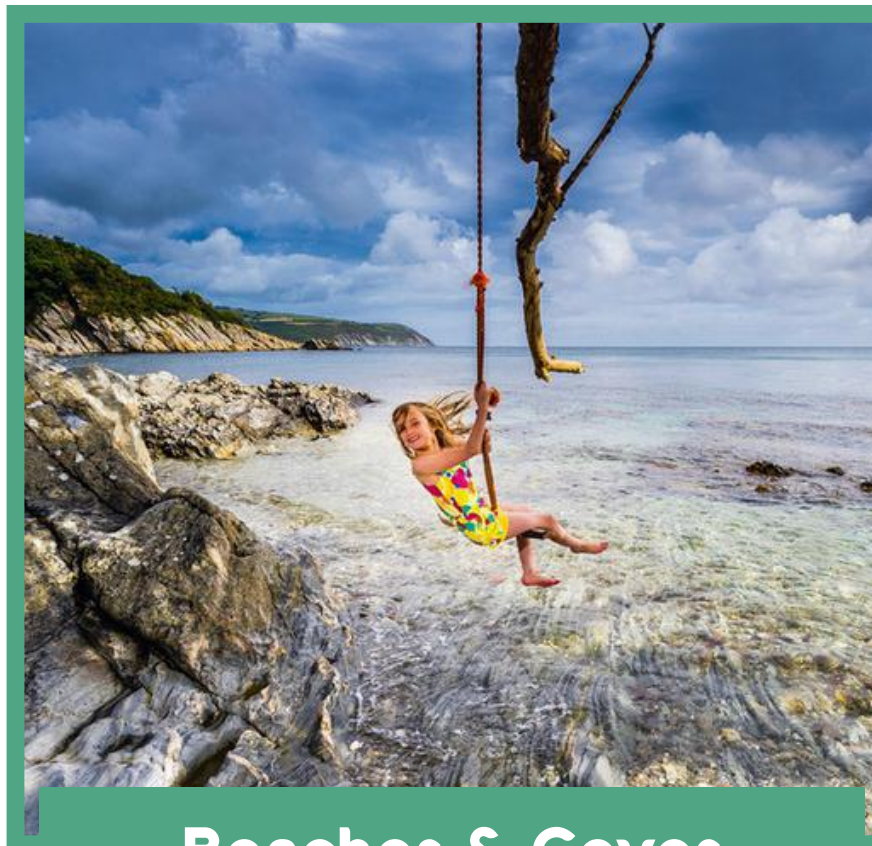
With a wide choice of specialist guides and tours, your clients can explore the beauty of the Island or the depths of the Island's waters at the pace they choose.

PRODUCT OVERVIEW



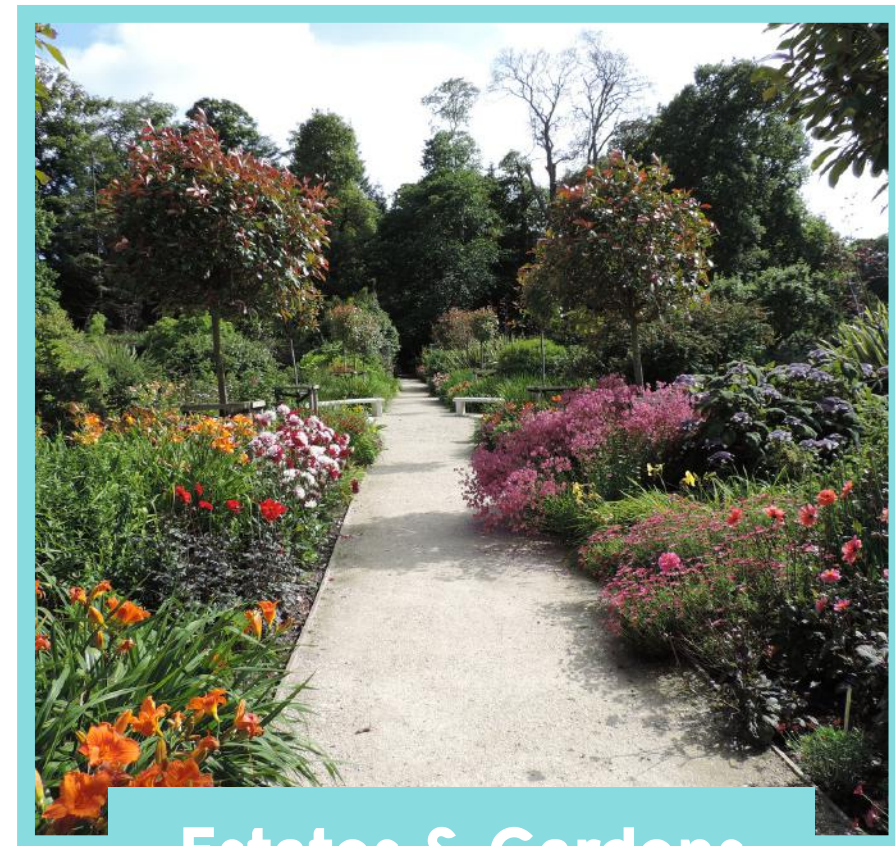
Dark Skies

The Isle of Man is home to the best dark skies in the British Isles. Low light pollution makes its skies some of the purest, with stars and planets seen by the naked eye from a choice of Discovery sites and through entertaining astronomical themed dining events.



Beaches & Coves

The Island boasts over 30 beaches and coves. Many are the destination of glen and discovered coastal walks, but popular resort beaches are great for relaxing or even a refreshing sea swim or dip.



Estates & Gardens

Less wild but just as beautiful and attractive to wildlife are the Island's gardens, some of which lie in historic estates. Others cared for by Forestry to attract butterflies, birds, lizards, as well as feeding bats.

WILD PLACES

The Island's enviable and diverse landscapes make it an incredible place to explore the natural world, uncover fascinating geology and coastal bird life and marine life. Many of these wild places are in designated nature reserves or can be found while exploring the Raad ny Foillan (Way of the Gull), coastal footpath.

- 7 Manx Wildlife Trust Nature Reserves
- 2 Nature Discovery Centres
- 3 Blueways Trails
- Marine Scene Sites
- Striking geological and natural sites
- Calf of Man Bird Observatory
- Manx Museum's Natural History Gallery
- Manx Whale and Dolphin Watch Visitor Centre

WILD PLACES

Highlights

- The volcanic past of **Scarlett and its Nature Discovery Centre** and Trail rich in flora and fauna
- The **Ayres Nature Discovery Centre and Nature Trail** leading through marram dunes and onto the expanse of heath with its extensive lichen flora, a haven for sea birds and its shores for visiting seals
- **Close Sartfield** for the magnificent display of wild orchids May to July and watching birds in the hide
- **Niarbyl Bay** for the romantic rolling hills and the site of a major geological fault line, self guided the the area can be discovered with the Niarbyl Blueway Trail
- The **Calf of Man and Bird Observatory** shelters an array of wildlife and is home to Manx Shearwaters, razorbills and a breeding place for 33 species. Book an organised boat trip for small groups or get an exceptional view of the islet from The Sound.





WILDLIFE

Coastal highlights

- Visit the Sugarloaf to see an impressive display of nesting guillemots, razorbills and kittiwakes.
- A small colony of puffins can be seen around Peel Hill, while black guillemots nest in Peel harbour wall.
- Basking Sharks visit between May and August and are reliably spotted on the West coast.
- Risso's dolphins are sighted on the east and south coast, from Marine Drive in the spring down to the Sound by the summer.
- Seals can be spotted at the Sound, between the land and the Calf of Man. Other great places to spots seals include Langness, Maughold head, and the Point of Ayre.

*Look out for signs in nesting season and follow the Coastal Code

GLENS, FORESTS & UPLANDS

Resounding the beauty of the Island's Celtic heritage are the heather and gorse clad hills, ancient woodlands and fern-filled glens with mystic waterfalls. Reference to the 'sweet mountain air' and 'green hills and rocks' are enshrined in our national anthem and the colours of the heather and gorse are woven into the fabric of Manx tartan. These places offer great opportunities for hikes or railway journeys and plenty of wildlife.

- 18 National Glens
- Snaefell Summit, North and South Barrule & coastal climbs
- Forest parks with mountain bike trails
- Qualified walking and mountain leaders
- Take a historic Railway journey to many glen stops or the Mountain Railway winding up Snaefell

GLENS, FORESTS & UPLANDS

Highlights

- Enchanting **Ballaglass Glen** for its swath of bluebells in May leading to a pebbly cove.
- Renowned for its rugged beauty and 190 steps, venture down a steep valley to one of the Island's highest waterfalls at **Dhoon Glen**, situated on the Manx Electric Railway.
- **Glen Helen** for a leisurely riverside stroll to the striking Rhenass waterfall.
- Three summits run through the Island like a backbone, climb **Snaefell**, the highest peak to see the Seven Kingdoms, or take the Mountain Railway and explore from there.
- Cronk ny Arrey Laa (Hill of the Day Watch) and Beinn-y-Phott for spectacular coastal viewpoints.
- **South Barrule Forest Park** for mountain bike trails, rope course adventures and tours.





WILDLIFE

Upland and inland highlights

- Mountain hares can be seen on the northern hills and are a spectacular sight in winter when their coats turn white.
- Hen Harriers can often be seen swooping around the lower part of upland sites.
- Closer to coastal peaks spot Chough.
- Find relics of ancient forests that once covered the Island, rare plants and abundance of ferns in Glen Maye.



*Look out for signs in nesting season and follow the Countryside Code

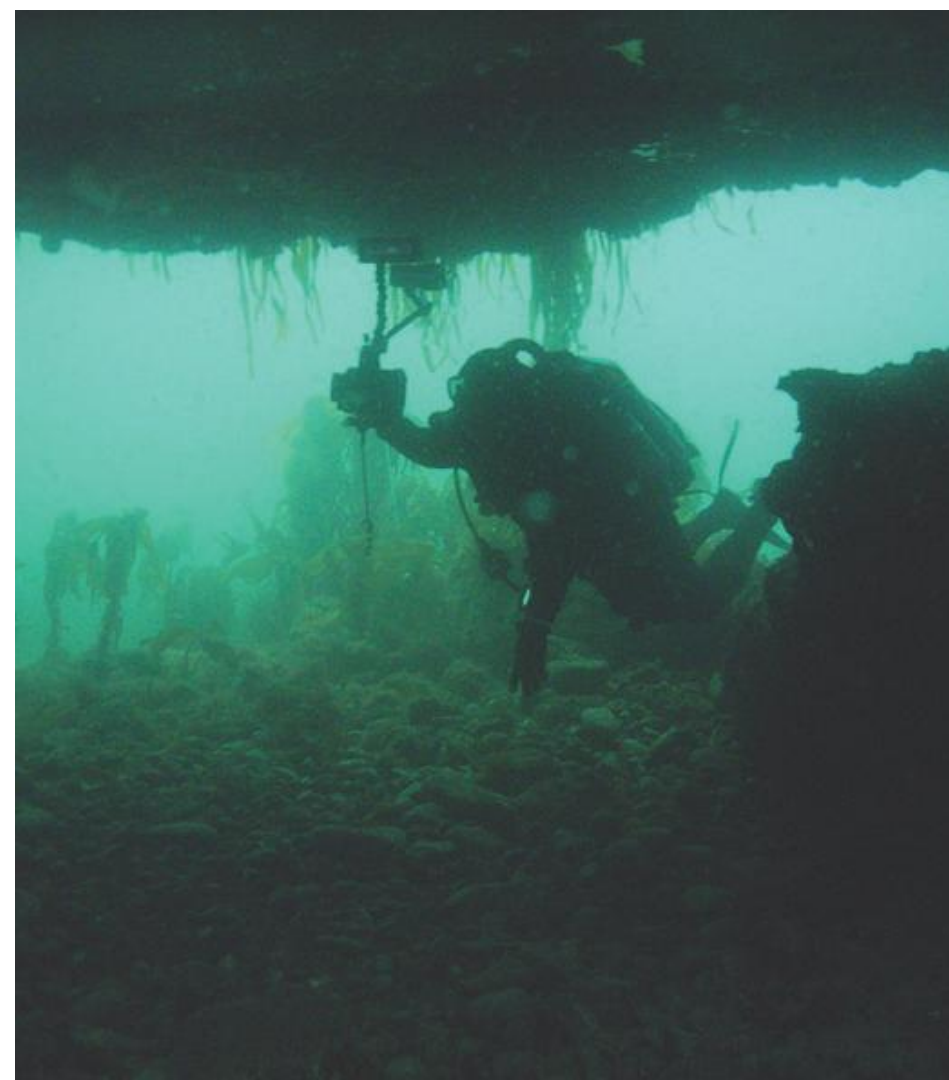
ISLE OF MAN / CONNECT WITH NATURE



IN NATURE DAYS

With a wide choice of specialist guides and tours your clients can explore the beauty of the Island or the depths of the waters at their pace

- [Manx Wildlife Trust](#) events and education courses with nature experts
- Qualified walking and mountain leaders or cycling guides to help capture the most outstanding landscapes
- Boat trips and kayak adventures around the Island's southern coast
- Coasteering around the rocky coast and gorge-walking through glens
- Dive underwater cliffs, rocky reefs and kelp forests which support a remarkable diversity of life
- Foraging tours with [Versa](#)
- Trek the countryside by horse with [Ballahimmin](#)



DARK SKIES

The Isle of Man is a truly special place for stargazers – with 26 official dark skies sites, designated as ‘Milky Way discovery sites’ – meaning the Milky Way is visible to the naked eye.

- A visit to Dark Skies Discovery locations
- Stargazer Friendly accommodation
- Seasonal stargazing and foodie events
- Isle of Man Observatory

DARK SKIES

Highlights

- Nestled in the Northern hills at foot of Snaefell, [Sulby Reservoir's](#) elevation provides a spectacular viewing site against the dramatic landscape.
- The crystal clear Northern horizon means the Northern Lights often be seen from the Island - [Peel Castle](#), [Ballaugh Beach](#) and [Glen Mooar Beach](#) have been popular places to glimpse the phenomenon
- Stay in a [Stargazing friendly accommodation](#) or a choice of rural and coastal properties on offer
- Take the mountain railway to '[Pie in the Sky](#)' Snaefell summit for evening of food and stargazing
- Book a customised group tour of the [Observatory](#) with the Isle of Man Astronomical Society. If the sky is clear you can observe through the telescope.



ADDED EXTRAS

Beaches and Coves

Isle of Man's shores are home to many fantastic and clean beaches. From sandy stretches to pebbly coves, you'll find the perfect spot for a picnic, stroll, or a surf. Clients could even join a beach clean with Beach Buddies, or a refreshing sea dips or swims.

Estates and Gardens

Peaceful days can be spent with nature in maintained park gardens and in the grounds of historical estates.

Refill Isle of Man

133 refill stations are part of the Refill Scheme allowing people to use their own containers for food and drink. Download the app before you visit and do your bit to reduce single use plastics.

UNESCO Biosphere Partners

Look for suppliers making a commitment to protect our Island using sustainable practices.



ISLE OF MAN / CONNECT WITH NATURE
/ ACCOMMODATION



Glamping in the glen



Convenient hotel accommodation with parking



Coastal self-catering accomodation



Stay on the Calf Bird Observatory hostel

PRODUCT LIST

Wild Places

Manx Wildlife Trust Nature Reserves*

[Ayres Nature Discovery Centre & Trail](#)

[Close Sartfield](#)

[Cronk y Bing](#)

[Dalby Mountain](#)

[Scarlett Nature Discovery Centre](#)

[Calf of Man and Bird Observatory](#) 

[Niarbyl Bay](#) 

[Manx Whale and Dolphin Watch Visitor Centre](#)

[Manx Museum](#) 



[Blueways Trails](#)

[Wildlife Viewing Spots & Marine Scene Sites](#)

Other In Nature Adventures

[Snorkel Safaris](#)

[Discover Diving](#)

[iDiveIsleOfMan](#)

[Adventurous Experiences](#)

[The Venture Centre](#)

[Sea Kayaking Isle of Man](#)

[Versa - Foraging Tour](#)

[Ballahimmin Riding and Pony Trekking Centre](#)

Glens and Forests

[Ballaglass Glen](#)

[Dhoon Glen](#)

[Glen Maye](#)

[Glen Helen](#)

[South Barrule Forest Park](#)

Dark Skies Discovery

[Sulby Reservoir](#)

[Glen Mooar Beach](#)

[Fort Island](#) 

[Cregneash](#) 

[Isle of Man Observatory](#)

Boat Trips

[Isle of Man Calf & Boat Trips](#)

[Manx Sea Life Safari](#)

[Port St Mary Boat Excursions](#)

[Shona Boat Trips](#)

[The Gemini](#)

Specialist Walking Tour Guides

[Go-Mann Adventures](#)

[Island Heritage Tours](#)

[Manx Footpaths](#)

[Conservation Group](#)

[Manx Mountain Activities](#)

[Manx Walks](#)

[Visit Mann Tours](#)

[Walking.im](#)

[Walking Mann Guided Walks](#)

[Wild Mann Tours](#)

Cycling Tour Guides

[Pedal to Progression](#)

[Manx Mountain Activities](#)

[Isle of Man Cycle Tours](#)

 **Click for more information**

*Note more Nature Reserves can be opened up specially for tours by arrangement



FUN FACTS

- Encounter the elusive wild red-necked wallabies roam the Island's northern Curragh. They have long been a source of fascination since their escape from the Wildlife Park in the 1970s.
- 'The Manx' is a breed of cat that actually comes from the Isle of Man, and its best known feature is its taillessness. They can often be spotted at Cregneash and at a new Cat Cafe in Douglas.
- Viking, King Orry came to Mann in 1079, arriving on a starry night. When asked where he had come from he pointed to the Milky Way and since that time, the Milky Way has been called in Manx Gaelic Raad Mooar Ree Gorree, or "The Great Way of King Orry".
- Visitors can explore the Island's natural beauty by poetry, visitors can also add their own contribution to the poetry map [here](#).



ASSETS

Video

- [Your Space Your Story Campaign video](#)
- [The Discoverers Youtube playlist](#)
- [Our Islanders - Howard Parkin \(Astronomer\)](#)

Imagery

- [Nature Isle of Man Image Library](#)

Brochures and Guides

- [Raad ny Foillan Coastal Footpath Guide](#)
- [Manx Wildlife Trust Guide](#)
- [Seas and Shores Booklet](#)
- [Your Extraordinary One Stop Guide](#)
- [Blueways Trails](#)

